

SDMH 1 Top 205.57
 INV."IN" (SE) 18"HDPE 201.50
 INV."OUT" (SW) 18"HDPE 195.01
 INV."IN" (NE) 4"PVC 201.27

SDMH 3 Top 179.88
 INV."IN" (NE) 24"RCP 171.02
 INV."OUT" (SW) 24"RCP 170.59
 INV."IN" (E) 18"HDPE 174.48
 INV."IN" (NE) 4"PVC 175.10

SDMH 2 Top 180.46
 INV."IN" (NE) 18"HDPE 175.26
 INV."OUT" (W) 18"HDPE 175.16

INLET 2 Top 213.19
 INV."IN" (S) 15"HDPE 206.29
 INV."OUT" (NW) 18"HDPE 206.01
 INV."IN" (S) 4"PVC 206.29

INLET 1 Top 210.14
 INV."OUT" (N) 15"HDPE 206.33

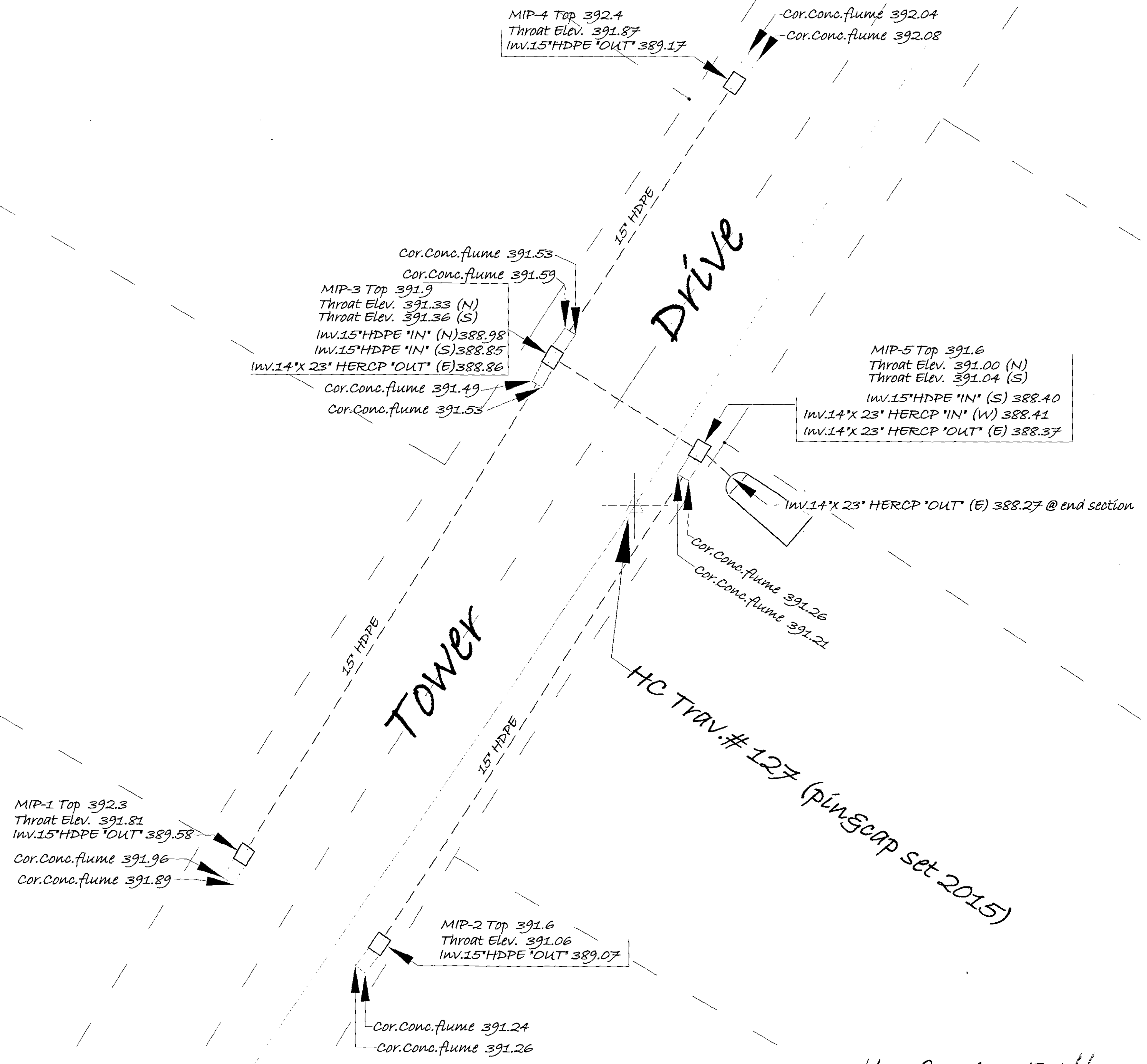
NOTE:
 *Dimensions shown between structures
 are centerline to centerline

JMTABEL 1
 (pin&cap)

JMTABEL 4
 (spike)

JMTABEL 3
 (pin&cap)

AS-BUILT (Storm Drain)
 between Abel St. and Merle Way
 September 2015



Ho. Co. As-Built
 by Ho. Co. Survey Division 11-23-15